



OUR CAPACITY IN INFRASTRUCTURE & ENERGY

Infrastructure Investor Global Summit

Berlin, October 18-21, 2021

CONTENTS

1

GIDE IN A NUTSHELL

2

OUR EXPERTISE IN INFRASTRUCTURE & ENERGY

3

OUR TEAM



1.

GIDE IN A NUTSHELL

GIDE, A UNIQUE LAW FIRM

By our clients' side for all their needs

1st INTERNATIONAL LAW FIRM MADE IN FRANCE

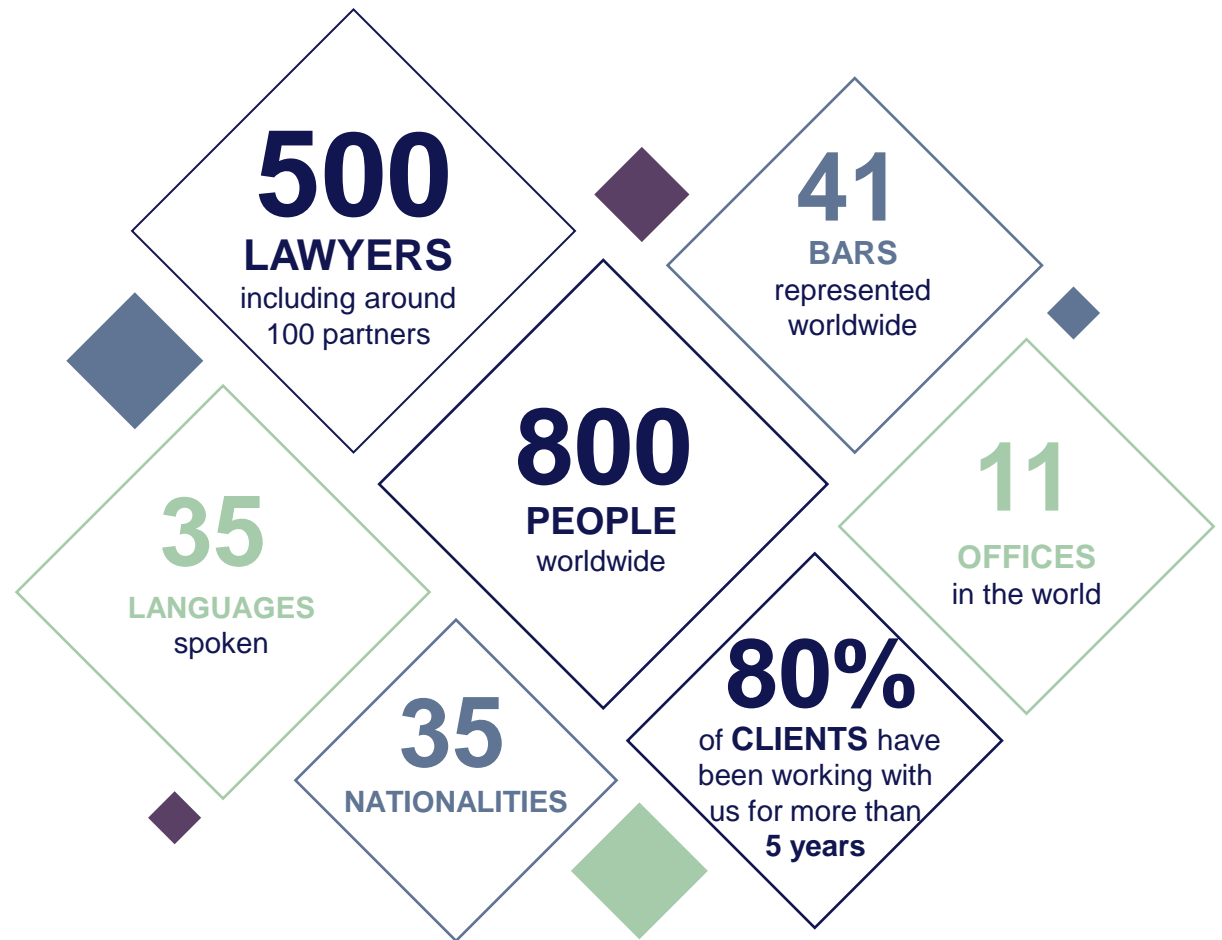
Business partner

Being by the side of our clients for all their development and transformation projects from a legal and strategic standpoint.

Excellence

Excellence in advice, client relations and knowledge, Gide sets itself apart through the depth and quality of its ability to set up multi-disciplinary teams.

Founded in PARIS IN 1920, our firm now numbers:



A MULTI-SPECIALIST LAW FIRM

Leading position in business advisory, transactional and litigation law.



A LAW FIRM PRESENT IN ALL THE FIELDS OF ACTIVITY



AVIATION, AEROSPACE
& DEFENCE



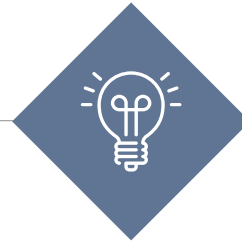
BANKS, INSURANCE
& FINANCIAL SERVICES



DIGITISATION,
& E-COMMERCE



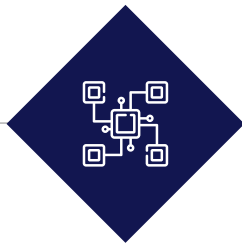
DISTRIBUTION,
CONSUMER
& ADVERTISING LAW



ENERGY & NATURAL
RESOURCES



ENVIRONMENT



FINTECH



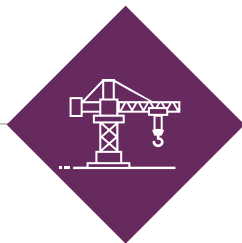
GOVERNMENTS &
PUBLIC SECTOR



HEALTHCARE,
PHARMACEUTICALS &
LIFE SCIENCES



INDUSTRY



INFRASTRUCTURE



INVESTMENT FUNDS &
ASSET MANAGEMENT



REAL ESTATE

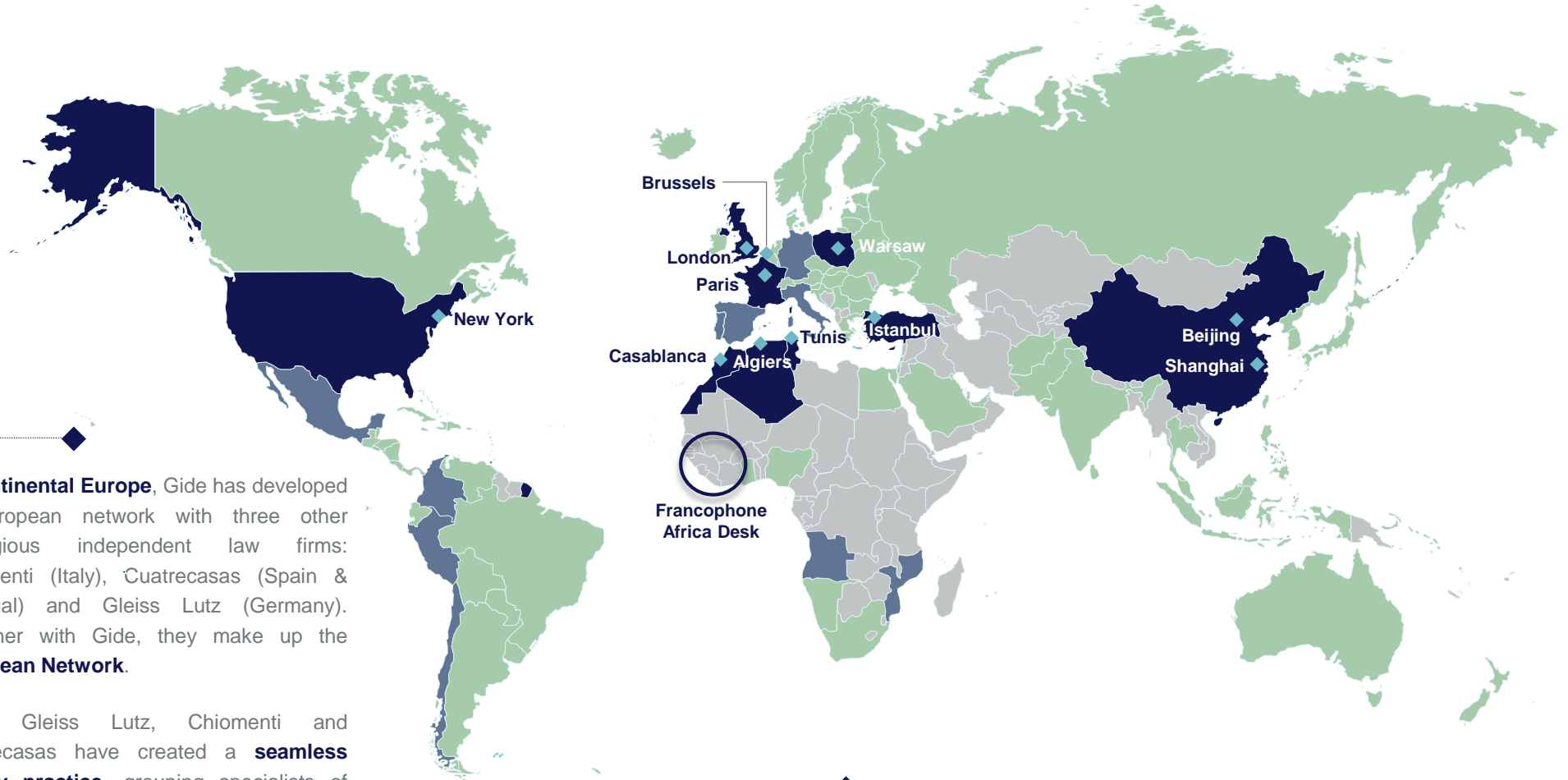


TELECOMMUNICATIONS, MEDIA
& TECHNOLOGY



TRANSPORT

A UNIQUE INTERNATIONAL PRESENCE



In continental Europe, Gide has developed a European network with three other prestigious independent law firms: Chiomenti (Italy), Cuatrecasas (Spain & Portugal) and Gleiss Lutz (Germany). Together with Gide, they make up the **European Network**.

Gide, Gleiss Lutz, Chiomenti and Cuatrecasas have created a **seamless energy practice**, grouping specialists of several expertises in the energy field (M&A, projects, regulatory, etc.).

Lex Mundi is the largest international network of independent law firms, with over 150 leading law firms in their jurisdiction. **Gide is the network's exclusive member for France.**



- ◆ Gide
- ◆ European Network
- ◆ Lex Mundi

GIDE AFRICA: OVER 40 YEARS' EXPERIENCE

Gide offers its **multidisciplinary expertise** throughout the African continent. With over 90 lawyers working regularly on matters in Africa, our team has extensive knowledge of national and regional legal regimes in Africa, such as **ECOWAS, CEMAC, WAEMU, SADC and OHADA.**

Capable of working in both **civil law** and **common law** countries, our team advises its clients on their operations in Africa in a number of business sectors, particularly energy, natural resources, transport, telecoms, as well as banking, insurance, the hotel industry, and distribution.

Gide also builds on a **significant network of leading local law firms and financial and technical experts across the continent** and continues to extend its offers to better serve its clients across all Africa with a strategic cooperation agreement with **Bowmans**, a leading African law firm.



GIDE, A LAW FIRM RECOGNISED AMONG THE BEST



MOST INNOVATIVE LAW FIRM IN EUROPE OF THE YEAR

The Financial Times Innovative Lawyers 2021



TOP RANKED LAW FIRM OF THE YEAR

Chambers Europe 2021



TOP TIER LAW FIRM OF THE YEAR

The Legal 500 EMEA 2021



FRANCE LAW FIRM OF THE YEAR IN BANKING & FINANCE AND CAPITAL MARKET

Best Lawyers 2022



FRANCE LAW FIRM OF THE YEAR

Who's Who Legal Awards 2019



FRANCE LAW FIRM OF THE YEAR

The Lawyer European Awards 2020



2

OUR EXPERTISE IN INFRASTRUCTURE & ENERGY

OUR EXPERTISE IN INFRASTRUCTURE & ENERGY

Our **M&A / Projects / Financing integrated and long-standing experienced team** acts on **all types of projects in the energy and renewable energy sectors**: dams, oil & gas, mining, nuclear, biomass, hydrogen, windfarms, solar complexes etc. and **on all types of transactions in all class of infrastructure assets** (roads, ports, airports, railways, public buildings and equipment) in Europe, Africa, Asia and North America.

OUR ADDED VALUE

Leading expertise in all aspects of energy: nuclear and thermal to the entire mining sector such as iron ore, gold, bauxite, phosphate, associated mining infrastructure (railways, roads, ports) and hydrocarbons such as oil, gas, LNG, petroleum products and biofuels, upstream, mid-stream and downstream operations.

In-depth knowledge of all renewable energies: advising sponsors, developers, financial institutions, investors, lenders and regulatory authorities in hydro, solar, onshore and offshore wind, waste to energy, hydrogen, biomass and biogas.

A firm that has developed its skill while implementing **cross-border projects with more than 250 projects worldwide in infrastructure.**

We advise our clients at every step of the value chain: development / construction / generation / purchase & provision / transport.

Perfect command of **innovative services and technologies** such as green bonds, blockchain, FinTech, data protection, etc. in order to support our clients in their transformation.

FIELDS OF EXPERTISE

- Projects/ Infrastructure
- Financing and Funding
- Regulatory (France & Europe)
- Mergers & Acquisitions
- Real estate and city planning
- Taxation
- Public Law & Environment
- Disputes and Litigation

Well-regarded department with strong domestic and global activity with a particular presence in Africa. Represents states, corporates and lenders. Regularly appointed on projects in a variety of sectors including natural resources, transport infrastructure and renewable energy. Expertise includes BOT projects, PPPs and project financing, with additional experience in contractual and M&A matters.

CHAMBERS GLOBAL & EUROPE 2021 | Projects & Energy

Gide has excellent capabilities and is able to deal with all types of work including project, public law, regulatory and M&A matters. The big team is regularly involved in renewables, hydroelectric and nuclear related-matters. The project practice is also top notch, with the team regularly handling major greenfield and brownfield French, European and African energy project work, including on renewables, acting for leading energy producers. Finally, the practice also handles major oil and gas work.

LEGAL 500 EMEA 2021 | Energy | Tier 1

GIDE'S RECENT CREDENTIALS IN INFRASTRUCTURE



Advising the French state for the privatization of the Nice Côte d'Azur and Lyon airports

Airport



Advising Paris Aéroports Management, Colas Madagascar, Bouygues Bâtiment International, Meridiam and the special purpose vehicle, Ravinala Airports, regarding the exploitation, operation, maintenance and financing of the rehabilitation of the Ivato and Nosy Be airports in Madagascar

Airport



Advising the concessionaire (CCI Seine Estuaire) for the extension of the concession, implementation of new works and refinancing of existing debt

Bridges



Advising Naval Group on the design, construction and maintenance of the US\$ 50 billion future Australian submarine fleet

Defence



Advising CNP in the consortium with La Banque des Territoires and EDF Invest for the acquisition of a 50% stake in Orange Concessions, created to support efforts to roll out optical fiber in less densely populated areas

Road



Advising Alicorne and its shareholders (APG, Ardian and NGE) on the bond refinancing of its financial debt and swaps

Road



Advising Ardian, Mirova and the BPCE group on their investment in the Toulouse airport, alongside the French State

Rail



Advising Eiffage for its partnership with CMA-CGM and Astris Infrastructure in the Puerto Antioquia concession in Colombia, as well as financing and structuring aspects

Port

GIDE'S RECENT CREDENTIALS IN INFRASTRUCTURE



Advising Caisse des Dépôts et Consignations in relation to the project of acquisition of a controlling interest in Dalkia Investissement (financing vehicle holding a participation in the concessionaire of Lyon Public Heating)

Heating



Advising Veolia on its tender offer for the entire share capital of Suez, French waste management company, from Engie, a French electric utility company

Industry



Advice the lenders refinancing APRR-AREA acquisition debt. We were advisor to the lenders for the 2 preceding refinancings in 2012 and 2015

Industry



Advising Bouygues and Aberdeen for the termination of the Caen hospital PPP and the transfer of the financing to the public authorities

Hospital



Advising the lenders of Compagnie des Alpes – POMA – ATMB Project Co

Leisure



Advising the operating company for the execution of the O&M contract concluded in connection with the concession of the high-speed line South Europe Atlantic (Tours-Bordeaux)

Stadium



Advising the City of Marseille in the execution of the partnership contract for the Orange Vélodrome stadium, in particular in the context of negotiations with the club concerning the consequences of the Covid-19 epidemic

Stadium



Advising Paris 2024 in the structuring and awarding of all contracts for the operation of competition venues, ceremonies and Olympic celebrations

Equipments

GIDE'S RECENT CREDENTIALS IN INFRASTRUCTURE - AFRICA



Advising IFC on several international infrastructure projects, including a concession for a bus rapid transit system for the city of Dakar (Senegal) and the assessment of private sector participation in port, airport and BRT/urban transport projects in Angola

Rail



Advising Ravinala Airports on the concession agreement for the development, financing, cleaning, maintenance, and operation of the Ivato (Antananarivo) and Nosy Be airports

Airport



中国路桥工程有限责任公司
CHINA ROAD & BRIDGE CORPORATION

Advising CRBC on setting up a joint venture with the Algerian state owned entity called Société Nationale de Travaux Publics aiming to carry out in Algerian mega-infrastructure projects

Road

Advising a leading sponsor in relation to a multi-billion port project for the mining industry in Pointe Noire, Republic of the Congo. Overall structuring of the project and reviewing and drafting project agreements

Port



Advising the Development Agency of Sèmè City, a Beninese public entity, on the structuring, development and financing of a city project dedicated to innovation

Public services



Advising the Kingdom of Morocco on legal aspects of a strategic study to reorganize the electricity and water distribution with a view to create specific regional entities to provide these public services

Public services



MILLENNIUM CHALLENGE ACCOUNT MOROCCO
وكالة حساب تحدي الألفية-المغرب

Advising the Millennium Challenge Account Morocco with respect to the implementation of a PPP pilot transaction with respect to the development and revitalization of two existing industrial zones and one new zone

Industry



Advising Sagemcom for Orange in Sierra Leone and Liberia on the setting up of an ESCO financing and operating hybrid electricity generation equipment for telecom towers

Telecom

SOME RELEVANT EXPERIENCES IN ENERGY



Advising ContourGlobal in its proposed acquisition of a portfolio of 4 biomass power plants in operation in France and Croatia from Akuo Energy

Biomass



Advising SAUR Group for the development of a methanisation plant. Our team advice Saur on issues related to classified facilities (ICPE) and waste regulations

Biomass



Regular advisor to Idia Capital Investment, for its investments on several solar IPPs: on the EUR 150-million capital increase of Amarengo group, in connection with the fundraising of Technique Solaire and on the fundraising of Sun'R

Solar



Advising the sponsors on the acquisition of a portfolio of solar assets in France and Spain from Dhamma Energy

Solar



Advising Ariane on its project to set up photovoltaic power plants (eight plants) on its sites in Les Mureaux, Vernon, Le Haillan and Issac, for self-consumption and injection into the electricity distribution network

Solar



Advising an international utility on the purchase of the RES French portfolio comprising wind, solar and storage projects and a platform for the development of new projects

Solar & Wind



Assisting Total Energies on Eolmed, a floating windfarm pilot project in France

Wind



Advising Naval Energies, a 100% subsidiary of Naval Group, on the sale of its floating wind activity (assets and staff)

Wind



Advising Total Energies on its participation to the tender launched by the French State for a 250 MW bottom-fixed offshore wind farm off the Normandy coast and on the floating off-shore wind farm off the Brittany coast

Wind



Advising Total Energies on its 50/50 partnership with Macquarie's Green Investment Group to develop a portfolio of 5 large floating offshore wind projects in South Korea

Wind

SOME RELEVANT EXPERIENCES IN ENERGY

<p>SCHAEFFLER</p> <p>Advising Schaeffler in its investment on HY24, an equally owned joint venture by Ardian and FiveT Hydrogen, whose purpose is investing in hydrogen projects (H2 mobility infrastructure, H2 mobility captive fleet, power to gas projects, etc.).</p> <p>Hydrogen</p>	<p>ENEDIS L'ELECTRICITE EN RESEAU</p> <p>Advising Enedis on innovative connection schemes allowing to incorporate renewable energies</p> <p>Energy services</p>	<p>ENGIE</p> <p>Advising Engie on the sale of Endel, the French leader in industrial maintenance and energy services, to Altrad, a French industrial group.</p> <p>Energy Services</p>	<p>EQUANS EMPOWERING TRANSITIONS</p> <p>Advising a bidder on the contemplated acquisition of Equans, world leader in multi-technical services.</p> <p>Energy Services</p>	<p>meridiam</p> <p>Advising Meridiam in its acquisition of a majority stake in Voltalis, the European leader in active management and reduction of electricity consumption for individuals.</p> <p>Energy Services</p>
<p></p> <p>Advising the French State on the legal aspects for the sale of Donges-Melun-Mets oil pipeline.</p> <p>Oil & Gas</p>	<p>DELTA OFFSHORE ENERGY</p> <p>Advising Delta Offshore Energy on the development of a 3200 MW gas-to-power in Vietnam to be supplied by an integrated LNG import project.</p> <p>Oil & Gas</p>	<p>edf</p> <p>Advising EDF on all its international EPR projects, including the largest nuclear power plant in the history based in Jaitapur (India) as well as EPR projects in the United Kingdom, in Poland and in Czech Republic.</p> <p>Nuclear</p>	<p>AREVA</p> <p>Advising Areva NP on the legal and tax aspects regarding the design, procurement and construction of two 1,600 MW nuclear power plants in Taishan, Guangdong Province in China.</p> <p>Nuclear</p>	<p>VEOLIA</p> <p>Advising Veolia Propreté on the design, construction, financing and operation of a power plant producing steam and electricity from the combustion of refuse derived fuel in Dombasles-sur-Meurthe, France.</p> <p>Power plant</p>

SOME RELEVANT EXPERIENCES IN ENERGY - AFRICA



Advising Meridiam as part of its investment in the company Biokala, developing with SIFCA and EDF the Biovea biomass plant project in Ayebo, Ivory Coast. With a capacity of 46 MW, it is the first biomass plant in sub-Saharan Africa using residues from the agroindustrial industry

Biomass



Advising the Great Lakes Countries (Burundi, Democratic Republic of Congo and Rwanda) regarding the negotiation of the Ruzizi III hydroelectric project. The overall cost of the investment is estimated at 650 million USD

Hydroelectric



Advising Neot Capital for the sale, implementation and financing of distributed solar home systems in Ivory Coast

Solar



Advising Meridiam and Gabon Power Company in relation to the public-private partnership project for the generation of energy via a 35MW production capacity new hydroelectric dam of Kinguélé Aval, on the river Mbei in Gabon

Solar



Advising IFC InfraVentures and Scatec Solar for the development of a 33 MW solar power project in Mali as well as in Côte d'Ivoire. Project includes negotiation and drafting of concession agreement, PPA and joint development agreement

Solar



Advising IFC and Côte d'Ivoire and Niger governments on the design and tendering process to develop photovoltaic power plants under the "Scaling Solar" initiative, which aims to create a viable market for solar energy in Africa

Solar



Advising SNEDAI in the context of the construction of a Power Plant and related infrastructure located in the port of San Pedro, Côte d'Ivoire, comprising the construction of a 400 kV drainage system of a 321 km length

Power plant



Advising PETROCI on two hydrocarbon storage infrastructure projects located in the port of San Pedro and in the port of Abidjan (Côte d'Ivoire)

Oil & Gas



Advising Brahms for the development, implementation and financing on a limited-recourse basis of a 12,000 barrel-per-day crude oil refinery with Associated port, pipeline and storage facilities in Guinea

Oil & Gas



Advising Chariot Oil & Gas in relation to its hydrocarbon exploration and exploitation activities in Morocco

Oil & Gas



3

OUR TEAM



Farah El-Bsat

Associé | Partner - Gide Paris

Projects Finance&Infrastructure, Banking & Finance

+33 (0)1 40 75 22 05

farah.el-bsat@gide.com

Admitted to the Paris Bar in 2009, Gide Partner Farah El-Bsat specialises in structured finance. She advises both lenders and sponsors in project finance transactions, in France and internationally.

Her recent experience includes the following: In 2017, Farah was involved in the refinancing of the French MoD's public-private partnership; In 2018, she advised the European Investment Bank on the second refinancing of the A19 motorway; In 2019, she advised VINCI on the financing of the A355 motorway; In 2021, she advised VINCI and Eiffage for the refinancing of the tunnel du Prado and the financing of the tunnel Prado Carrenage extension. In 2020, she advised the Sponsors on the A88 motorway refinancing. In 2021, she advised the lenders in the financing of a cable car in the valley of Flaine.

Farah joined Gide in 2008. She holds a postgraduate degree (DEA) in international law and international organizations from the University of Paris I - Panthéon-Sorbonne.



Alexis Pailleret

Associé | Partner - Gide Paris

M&A / Corporate

+33 (0)1 40 75 94 65 | +33 (0)6 60 20 99 49

pailleret@gide.com

Alexis Pailleret is a partner within Gide's Mergers & Acquisitions / Corporate practice group in Paris. He acts on M&A transactions (acquisition, disposals and joint ventures) mainly in the infrastructure and energy sectors.

His recent experiences include advising TotalEnergiesRenewables as part of a consortium with RWE in the ongoing offshore bottom-fixed tender offer alongside the coast of Normandy, and as part of the consortium with Macquarie and Qair in the ongoing offshore floating tender offer alongside the coast of Brittany (ongoing), Eiffage and DIF on their acquisition project of the solar IPP Dharma Energy (2021), Enel of the acquisition project of the French activities of the developer RES (2021), the Crédit Agricole group, Bpifrance and Rgreen Invest for their investment in a French solar IPP Sun'R (2021), TotalEnergies Renewables on its partnership with Macquarie for the development of five offshore wind projects in South Korea with a cumulated capacity exceeding 2 GW (2021), Mirova on its partnership with Corfu Solaire (2020), Tenergy for the acquisition of a solar portfolio in operation located in France from Danish pension fund Green Power Partners (2020), the Crédit Agricole group on its investment and re-investment alongside Tikehau in solar IPP Amarenco, developing solar assets in Ireland, France, the Middle East and the Asia Pacific region (2020), the Crédit Agricole group and Bpifrance for their investment in French solar IPP Technique Solaire, operating projects in France and India (2020), Mirova for the acquisition of a controlling stake in a portfolio of biomass assets controlled by Engie (2020).

Alexis is recommended in M&A, namely in the energy and infrastructure sectors, by international legal directories such as Legal 500 and Best Lawyer.

"Great attention to detail while remaining solution-oriented, unique negotiating skills and ability to handle totally locked-in situations, great knowledge of the asset class infrastructure (but not only), available 24/7, very proficient in English, unanimously appreciated personality" Legal 500

"Alexis Pailleret is a deal-oriented M&A lawyer who is strongly focused on business results. He is able to negotiate commercial issues and the whole contractual framework, which makes him a very valuable adviser" Legal 500



Guillaume Rougier-Brierre
Associé | Partner - Gide Paris
M&A / Infrastructure

+33 (0)1 40 75 29 25

rougier@gide.com

Guillaume Rougier-Brierre is a Paris-based partner in the M&A and Infrastructure practice groups. He specializes mainly on (i) acquisitions and privatizations, and (ii) foreign investments and joint ventures. He has unique international experience, gained from working three years in the Gide Warsaw office (1997-2000), managing the Gide Istanbul office from 2000 to 2006, and heading the China Corporate and M&A practice until 2010.

Guillaume advises on a regular basis on infrastructure privatizations (e.g. airports, pipelines), industrials such as Michelin on mobility-related acquisitions (hydrogen stacks) and infrastructure fund players such as Meridiam, CNP, OFI-Infravia, and infrastructure funds. Guillaume notably advised the French State on the privatization of regional airports of Lyon and Nice and the sale of the DMM oil pipeline; CNP on the Orange fiber consortium, the take-over of Géométhane, underground natural gas storage facilities in Manosque and the sale to Abertis of its shares in the motorway concession company Sanef ; Méridiam Infrastructures on the sale of a stake in the high-speed line project Tours-Bordeaux to the Development Bank of Japan and Voltalis take over; OFI-AviAlliance-BPCE on their bid for the partial privatization of Aéroport Toulouse-Blagnac.

Guillaume is admitted to the Paris Bar (1997) and is a partner at Gide since 2002. He graduated from Institut d'Etudes Politiques de Paris (1993) and from the University of Paris II – Assas (1991).



Stéphane Vernay
Associé | Partner - Gide Paris
Projects Finance & Infrastructure

+33 (0)1 40 75 22 99

vernay@gide.com

Partner Stéphane Vernay is a member of the Projects (Finance & Infrastructure) practice group. He has substantial experience in project finance (including PPPs, BOT and concession) in sectors such as energy (nuclear, thermal, hydro, renewable energies), transportation (airports, highways, bridges, tramways, subways etc), water treatment, heating and cooling urban networks and general infrastructure (stadia, universities, cultural buildings) acting for governments, sponsors or lenders.

He has developed particular expertise in the fields of national and international contracts in the aerospace and defence industries, advising on construction, maintenance and service contracts related to ships, aircraft, submarines, simulators, satellites and other military products.

Stéphane has advised several MNEs in their infrastructure projects in Europe, Africa, Asia and South America. He is currently advising the French Ministry of Defence and manufacturers on various military projects.

He spent more than 12 years in the Gide China team as co-head of the Beijing office and helped open the Hong Kong office in 2006.

GIDE

GIDE LOYRETTE NOUËL



BY YOUR SIDE AT KEY MOMENTS

ALGIERS
BEIJING
BRUSSELS
CASABLANCA
ISTANBUL
LONDON
NEW YORK
PARIS
SHANGHAI
TUNIS
WARSAW

gide.com

