

INSURANCE, INDUSTRIAL RISK & TRANSPORT

Gide boasts a team of prominent experts in insurance, industrial risks, transportation, maritime and aviation law. Our global Insurance, Industrial Risk & Transport practice group has some 30 lawyers who are skilled in handling the wide range of insurance and transport issues facing companies and other organisations.

Our lawyers advise on contentious and non-contentious matters (whether civil or criminal). The team's full service expertise allows us to provide clients with an integrated service encompassing insurance and reinsurance contract law, insurance contract distribution, insurance and reinsurance company regulation, litigation and arbitration, taxation and all aspects of shipping, aviation and transportation law.

We advise on structuring the legal and tax aspects of the acquisition, financing, and operation of assets, and the outsourcing of transportation services. The team also assists in drafting and negotiating all related contractual documents, and, when necessary, those regarding public tendering procedures.

Gide's wide range of clients includes insurers, reinsurers, service providers, manufacturing and commercial companies, shipowners, airlines, shipbuilders, aircraft companies, commodity traders, and public bodies.

Local knowledge, underpinned by our international expertise, enables the firm to offer integrated advice on complex international operations and litigation, and to help its clients take full advantage of new opportunities and anticipate risks.

An International Network

Members of the Insurance, Industrial Risk & Transport practice group represent clients before national and international commercial, civil and criminal courts and tribunals in both civil and common law jurisdictions.

Gide's offices are fully integrated in the cultural, legal, economic, and political context of the countries in which they are located and are in regular contact with national administrations and agencies. The firm is also a member of several international networks and works in close cooperation with top-tier local firms in countries where it does not have an office.

“First-class firm regularly acting on disputes between insurers and on behalf of insureds. Advises French and multinational players on the acquisitions of insurance portfolios and on digitisation projects. Represents clients in class actions as well as civil and criminal litigation. Multifaceted practice able to assist with industrial risk matters, insurance start-ups and interactions with national regulators. Clients praise the ‘excellent and dedicated team’ which provides ‘good client service and responsiveness.’ Interviewees also appreciate that ‘the specialisms of the firm’s departments complement each other.’ »

Chambers Europe 2019

ALGIERS

BEIJING

BRUSSELS

CAIRO

CASABLANCA

ISTANBUL

LONDON

NEW YORK

PARIS

SHANGHAI

TUNIS

WARSAW

Diversified Clientele

Gide's Insurance, Industrial Risk & Transport practice group offers a full range of legal services to:

- Insurers
- Reinsurers
- Banks and financial institutions
- Developers, construction firms
- Industrial concerns
- Air companies
- Multimode transport firms
- Insurance brokers, agents & intermediaries
- Public authorities
- Property companies
- Car manufacturers
- Shipowners
- Road haulage operators
- P&I clubs



Market-leading insurance team acting on both regulatory and litigation matters. Advising domestic and international insurance companies, insurance brokers and agents, as well as French authorities.

Areas of expertise include industrial risks, transport and aviation. Also skilled at handling large-scale financial cases, including class actions. »

Chambers Europe 2018

Main Areas of Expertise

Insurance

- Insurance contract law (life & non-life insurance)
- Insurance distribution - Insurance contracts for public authorities and bodies
- Insurance company regulation
- Insurance disputes, arbitration and litigation
- Insurance and taxation
- M&A and insurance
- Reinsurance
- Industrial risk

Maritime Law

- All events linked to the life of a ship, from the construction agreement to the arrest of a ship, whether under the general provisions of owner's liability or special provisions relating to pollution
- All transport agreements under the bill of lading and the ship's chartering through charter-parties
- Insurance problems relating to all aspects of maritime business, including those concerning cargo or civil liability

Asset Financing

- All questions relating to the financing of ships and aircraft through mortgage loans with tax leverage, liaising with the Banking & Finance, Projects, and Tax practice groups, including problems relating to the registration of ships, aircraft and security interests

Ports and Customs

- All disputes relating to customs law and relations with port authorities
- Disputes relating to property in the public domain or port police authorities
- Setting up of handling and maritime agency companies, and the care and control of their litigation

Aviation

- All air transport litigation, involving the carriage of both passengers and freight
- All legal issues concerning aircraft, aircraft mortgage rules and the seizure of aircraft to enforce security interests
- All insurance problems relating to such disputes
- All agreements relating to the financing and operation of aircraft

Road Transport

- All advisory and litigation questions relating to road transport under both internal or CMR regulations, including related insurance issues

Multimode Transport

- All questions relating to transport logistics and the forwarding agency business

International Trade & Economic Law

- Maritime sale, incoterms, documentary credit, transport financing, trading agreements
- All competition law issues and how it applies to transportation law

A Multifaceted Practice & An Innovative Approach

Members of Gide's Insurance, Industrial Risk & Transport practice group have considerable expertise in insurance, transport and economic law, and work closely with the firm's international offices and other specialist practice groups, such as Banking & Finance, Tax, Public and Administrative Law / Environment, to give legal advice and devise litigation strategies best adapted to client circumstances.

Our lawyers are members of the *Association Française de Droit Maritime* (French Association of Maritime Law), the *Comité Maritime International* (International Maritime Committee), and the *Association des Diplômés de l'Institut des Assurances de Paris* (ADIAP) (Insurance Institute of Paris).

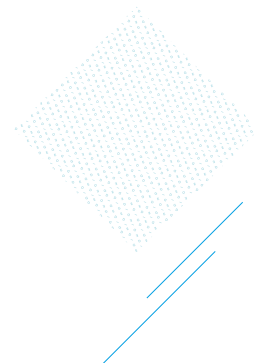
In addition to their advisory capacity, they take an active role in, and remain constantly abreast of, legal developments in the insurance and transport fields through articles featured in specialist publications and periodicals such as the *Revue Générale du Droit des Assurances* (General Insurance Law Review) and *Lamy Assurances*, and by frequently attending specialist conferences such as those organised by the *Association Internationale de Droit des Assurances* (A.I.D.A.) (International Insurance Law Association) and the *Association des Juristes d'Assurance et de Réassurance* (A.J.A.R.) (Insurance and Reinsurance Lawyers' Association).

Gide Loyrette Nouel A.A.R.P.I. assists with contentious and non-contentious matters, especially in the finance and insurance and reinsurance sectors. Richard Ghuelldre heads the practice, with Capucine Bernier as the other main practitioner. In recent work, the duo defended CNP Assurances subsidiary Filassistance International in several headline-grabbing civil litigation and criminal proceedings regarding Humania Consultants, its partners and clients. In a stand-out matter, Eurazeo instructed the practice to assist with the insurance aspects of its acquisition of Albingia; the team jointly worked with corporate expert Olivier Diaz. It also defended Axa in France's first finance and reinsurance class action, which further underlines the practice's excellent reputation. Clients also include AIG, Allianz and EDF. Of counsel Jonathan Rubinstein joined from DLA Piper.»

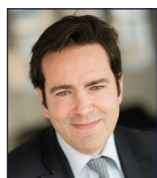
Legal 500 EMEA 2019

Advises airlines and manufacturers on product liability and regulatory matters in addition to assisting with litigation following major aircraft accidents. Offers further experience in insurance and reinsurance issues and aircraft and engine maintenance. Also acts on finance and competition matters within the aviation industry. Further expertise lies in drafting and negotiating a variety of commercial contracts, including code sharing, operation, maintenance and lease agreements. Clients appreciate the team's 'high-quality service' and describe the lawyers as 'responsive and available.' Advised La Réunion Aérienne as insurer of the manufacturer on issues arising from the crash of an EC145 helicopter. Advised Global Aerospace on a large number of claims following incidents on airport premises across France.»

Chambers Europe 2018



Insurance, Industrial Risk & Transport Coordinating Partners



Richard Ghuelldre
tél. +33 (0)1 40 75 22 55
ghuelldre@gide.com

Richard Ghuelldre is the partner in charge of Gide's Insurance, Industrial Risks & Transport practice group. He specialises in domestic and European insurance and reinsurance law, as well as tort law.

He has extensive experience, both in an advisory and litigation capacity, in insurance contract law (life and non-life), regulatory issues concerning corporate and insurance intermediaries (establishment, operational aspects and restructuring), as well as in setting up insurance programmes and distribution schemes both in France and abroad.

Richard has developed expertise in settlements (pre-litigation, litigation, arbitration) and claims management, particularly in industrial risk cases. He also has experience in litigation before the French Prudential Supervision and Resolution Authority (ACPR) and in group action.

Richard acts as regular counsel for a number of traditional insurance actors as well as banking and financial operators, industrial groups and service providers, in addition to foreign law firms dealing with insurance issues.

His assistance was sought in particular in portfolio transfer operations, the establishment, acquisition and restructuring of insurance, reinsurance and brokerage companies, as well as in major projects to analyse and bring insurance products or distribution schemes into compliance.

Richard Ghuelldre is a lecturer at Master's level in insurance law (Paris Dauphine University) as part of the Paris insurance institute, whose alumni association (ADIAP) he chairs.



Capucine Bernier
tél. +33 (0)1 40 75 22 55
bernier@gide.com

Capucine Bernier specialises in insurance law and civil liability. She acts most particularly in disputes pertaining to non-life insurance (damages, civil and professional liability, unusual and industrial risks) as well as life insurance. She advises and assists both traditional and bank insurers, and various industrial players in the management of disputes that are either sensitive or have a major strategic and economic impact. Capucine is a member of the Union of young French insurers and reinsurers (UJARF), the Insurance and Reinsurance Lawyers Association (AJAR), the International Association of Insurance Law (AIDA), and is the vice-chair of the Paris Insurance Institute alumni association (ADIAP).

He is a member of various professional insurance associations, including the permanent scientific committee of AMRAE (Association pour le Management des Risques et des Assurances de l'Entreprise) and the Intermedius institute. He is also a member of the board of directors of the International Insurance Law Association (AIDA).

He holds a PhD in law (University of Paris I - Panthéon Sorbonne), is a graduate of the Institut des Assurances de Paris, holds a Master's degree in business law and economics and a Master's degree in insurance law, both from Paris I University. He is also the author of numerous articles on insurance and reinsurance, co-author of Lamy Assurances, Secretary General of the Revue Générale du Droit des Assurances, and moderator of numerous conferences and seminars on insurance and reinsurance topics.

He is listed as **Leading Individual** in the Insurance section of the *Legal 500 EMEA*, *Chambers Europe*, *Who's Who Legal* and *Best Lawyers* directories.

Richard Ghuelldre is praised for his long-standing experience in insurance litigation. He also frequently assists with insurance regulatory matters and the issuance of insurance programmes. Sources laud his breadth of expertise, noting that he provides 'a real understanding of insurance products, processes and regulations.' »

Chambers Europe 2019

Capucine is also a regular speaker at conferences and a contributor to a number of specialist publications. She holds a degree from the Paris Insurance Institute, and two Master's degrees, respectively in insurance law and in business law, from the University of Paris I - Panthéon Sorbonne and Paris V.

According to sources, Capucine Bernier offers an 'in-depth knowledge' of the sector. She is well versed in litigious cases and acts on life and non-life insurance disputes. Clients commend her 'great availability and very detailed analysis which enables good, strategic decision-making.' »

Chambers Europe 2019